

Switching eMARS to Dark Mode in Your Browser

Many of us spend hours a day in front of our screens, and that much screen time can take a toll on your eyes. Did you know you can run eMARS in Dark Mode by configuring your web browser?

Dark Mode replaces bright backgrounds with darker tones and light text, reducing glare and creating a softer visual experience—especially in low-light environments.

Benefits of Dark Mode

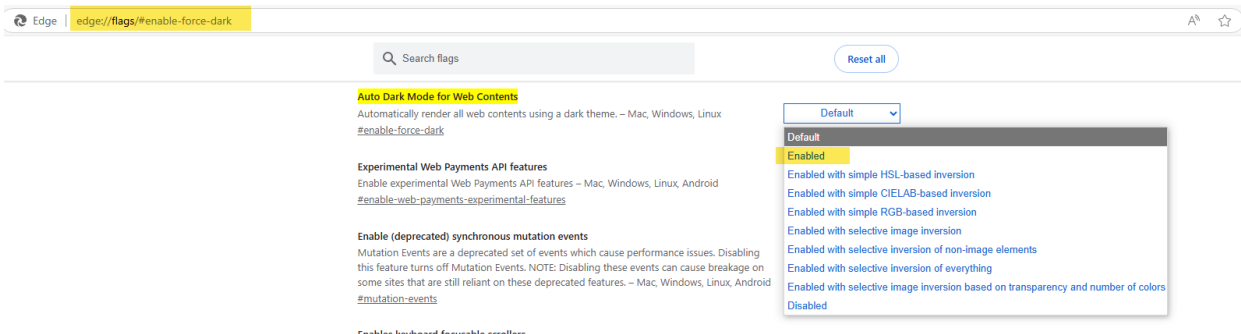
1. Reduced eye strain in low-light settings
2. Lower glare for more comfortable viewing
3. Potential battery savings on laptops and mobile devices with OLED screens
4. Sleek, modern look that some users simply prefer



How to Configure Dark Mode in Microsoft Edge

Force it in Edge by opening a new tab and using this link <edge://flags/#enable-force-dark>

1. **Copy paste** link and hit **enter**
2. **Locate** "Auto Dark Mode for Web Contents"
3. Set to "**enabled**"
4. **Restart** Edge



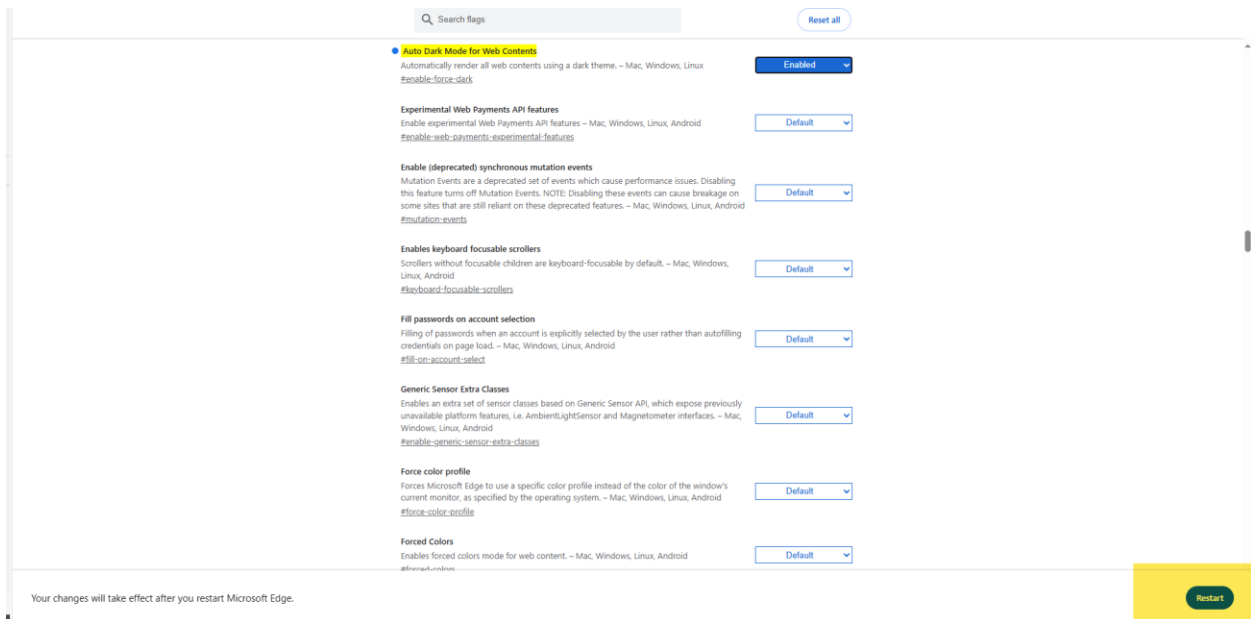
1. Open **Edge** and click the **three dots (•••)** in the top right corner.
2. Select **Settings**.
3. In the left-hand menu, choose **Appearance**.
4. Under **Overall appearance**, select **Dark**.
5. Restart or refresh eMARS to apply the new look.



How to Configure Dark Mode in Google Chrome

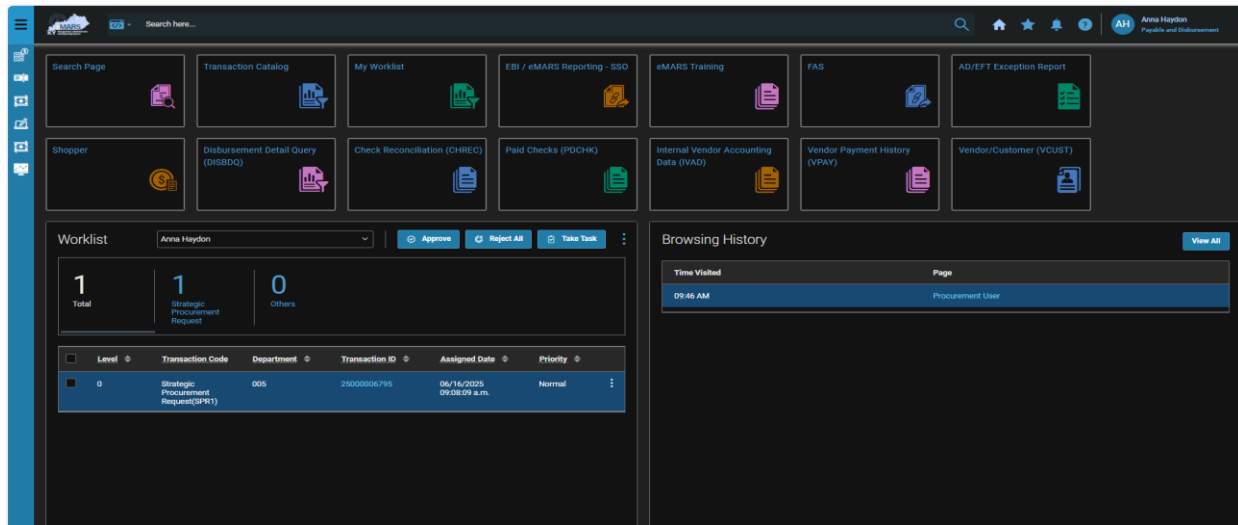
Steps to Enable Auto Dark Mode for Web Contents

1. **Open Chrome:** on your desktop.
2. **Navigate to Chrome Flags:** by typing `chrome://flags` into the address bar and pressing Enter.
3. **Search for the Flag:** in the search bar that appears at the top of the Experiments page, type in "dark mode".
4. **Locate "Auto Dark Mode for Web Contents":** and click the dropdown menu next to it.
5. **Select "Enabled":** from the options.
6. **Relaunch Chrome:** by clicking the "Relaunch" button at the bottom of the screen to apply the changes.



1. Open **Chrome** and click the **three dots (:)** in the top right corner.
2. Select **Settings**.
3. Click **Appearance** in the left menu.
4. Under **Theme**, click **Dark** (or choose **System Default** if your OS is already in Dark Mode).
5. Refresh eMARS to see the updated style.

If you spend long hours in eMARS, switching to Dark Mode could make your daily work just a little easier on the eyes—while giving your screen a fresh new look. **Give it a try!**



Are Downloads Taking Over Your Computer?



We've made a change in eMARS that will help keep your computer running cleaner and with fewer unnecessary files. Previously, when you opened an attachment from eMARS using the View PDF feature, it would download directly to your computer's storage. Over time, this could clutter your downloads folder with duplicates and old files you really don't need.

Now, these PDF attachments will open in a separate browser window instead of downloading automatically. This improvement helps reduce storage buildup on your machine while still giving you quick access to the files you need.



Tip: To make sure PDF files open correctly, please ensure that your browser's pop-up blocker is disabled for eMARS.

Note: Other attachments will still download to your computer's storage.

Extended Description Now Required on Solicitation Transactions

To strengthen clarity and transparency in procurement, eMARS now requires the Extended Description field to be completed on all solicitation transactions.

This field should include detailed supporting information related to the procurement such as the purpose, scope, and any key details that will help reviewers and approvers understand the request. Providing this information upfront ensures that solicitations are processed more efficiently and reduces the need for follow-up questions.



Agencies are encouraged to make their descriptions as thorough as possible to support accuracy and accountability throughout the procurement process.

Cost Accountants – Federal Program Set Up Reminder



Please be sure to include the ALN (Assistance Listing Number) in your federal grant set up.

The ALN should be entered on the Funding Line or PPC (Program Period Code) “Funding Identification” section of the MP (Major Program), see below. If your department’s federal MP does not currently have an ALN entered, you can update with a CAM transaction. When setting up new federal grant awards with new major programs, this should be included on the CAS transaction.

A screenshot of the eMARS 'Funding Identification' form. The form has three tabs: 'General Information', 'General Options', and 'Funding Identification'. The 'Funding Identification' tab is active. The form contains several input fields. Two fields, 'Federal Catalog Agency' (containing '84') and 'Federal Catalog Suffix' (containing '123'), are highlighted with red rectangular boxes. Other fields include 'Federal Agency Name' (Department of Education), 'Federal Catalog Prefix' (84), 'Federal Appropriation Number', 'Federal Payment System' (G5), 'SEFA ID', 'SEFA Description', 'Common Accounting Number', 'External Account Number', 'Letter of Credit Number', and 'Construction Budgeting Authority Number'. There is also a small '0/256' indicator near the SEFA Description field.

If users have any questions or need further assistance, please contact the [Customer Resource Center \(CRC\)](#).